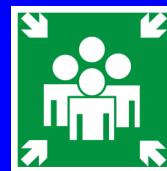




Fire Action

If you discover a fire:

1. Immediately operate the nearest fire alarm call point. Dial 222 to alert Security, if safe to do so.
2. Evacuate the building via the nearest available exit and report to the assembly point.



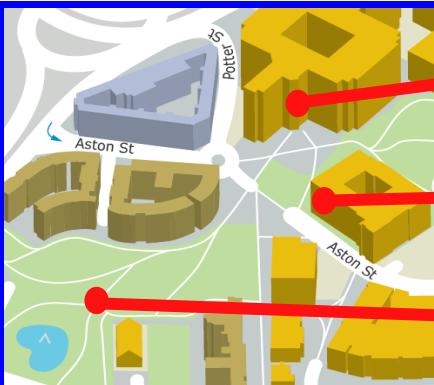
On hearing the fire alarm:

3. Evacuate the building via the nearest available exit.
4. Report to the assembly point located at:



Evacuation 7am-11pm: Lakeside amphitheatre area

Evacuation 11pm-7am: Inside the main reception of the Main Building



11pm - 7am Night Assembly Point

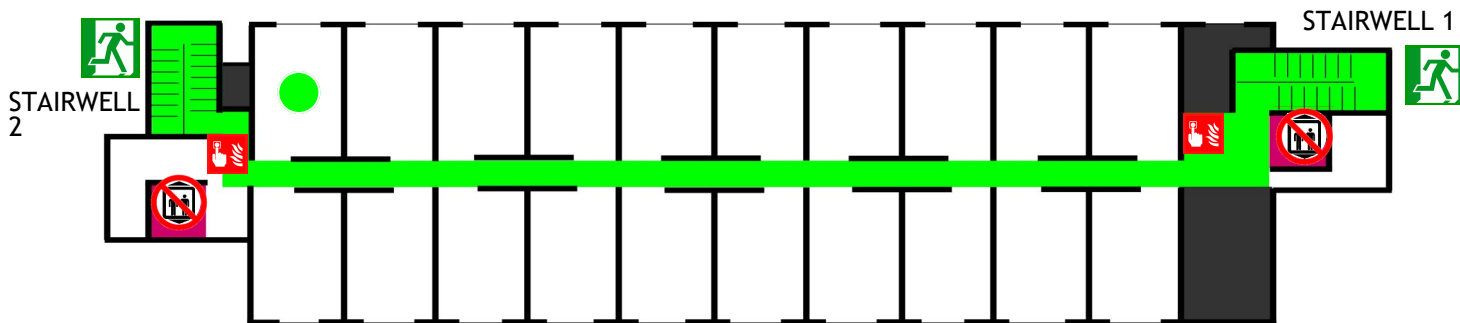


Conference Aston Hotel Building - You are here



7am - 11pm Day Assembly Point

5. Do not use the lifts
Do not stop to collect personal belongings
Do not re-enter the building until authorised to do so
Do not fight fire unless trained to do so
It is the responsibility of the guest, upon hearing the fire alarm, to evacuate the building.



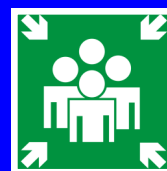
● YOUR CURRENT LOCATION
 SAFE ROUTE TO FIRE EXITS
 FIRE ALARM
 FIRE EXITS



Fire Action

If you discover a fire:

1. Immediately operate the nearest fire alarm call point. Dial 222 to alert Security, if safe to do so.
2. Evacuate the building via the nearest available exit and report to the assembly point.



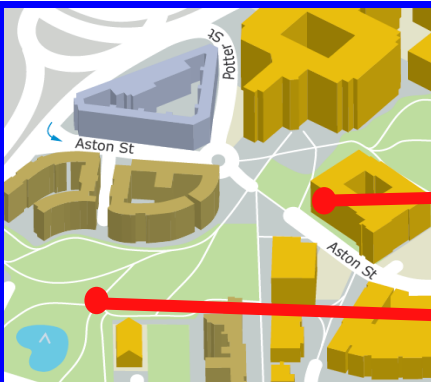
On hearing the fire alarm:

3. Evacuate the building via the nearest available exit.
4. Report to the assembly point located at:



Evacuation 7am-11pm: Lakeside amphitheatre area

Evacuation 11pm-7am: Inside the main reception of the Main Building

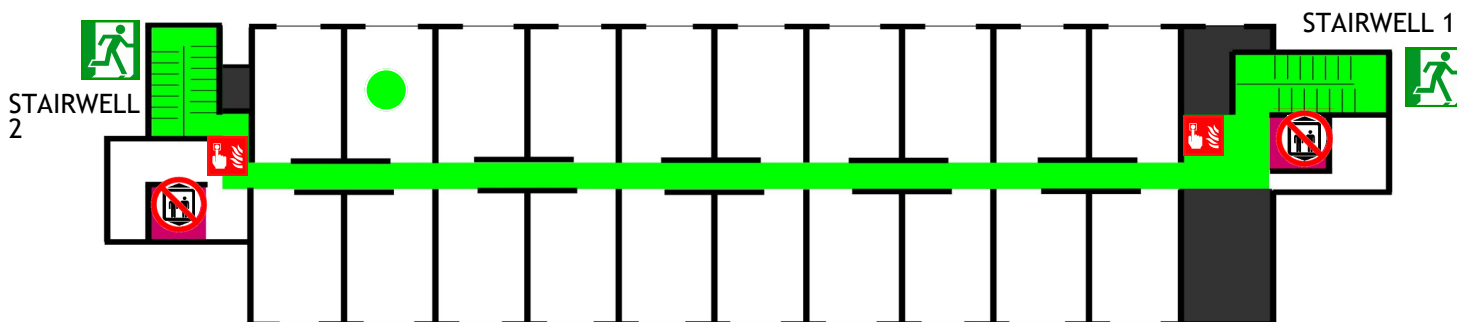


Conference Aston Hotel Building - You are here



7am - 11pm Day Assembly Point

5. Do not use the lifts
Do not stop to collect personal belongings
Do not re-enter the building until authorised to do so
Do not fight fire unless trained to do so
It is the responsibility of the guest, upon hearing the fire alarm, to evacuate the building.



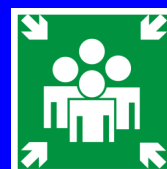
● YOUR CURRENT LOCATION ■ SAFE ROUTE TO FIRE EXITS 🔔 FIRE ALARM 🚪 FIRE EXITS



Fire Action

If you discover a fire:

1. Immediately operate the nearest fire alarm call point. Dial 222 to alert Security, if safe to do so.
2. Evacuate the building via the nearest available exit and report to the assembly point.



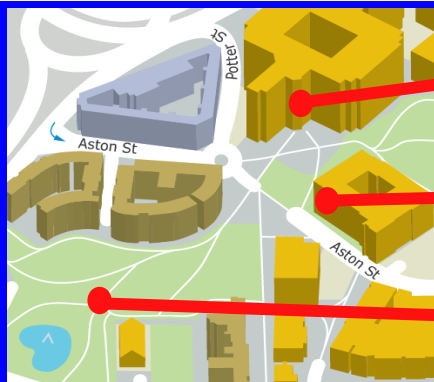
On hearing the fire alarm:

3. Evacuate the building via the nearest available exit.
4. Report to the assembly point located at:



Evacuation 7am-11pm: Lakeside amphitheatre area

Evacuation 11pm-7am: Inside the main reception of the Main Building



11pm - 7am Night Assembly Point

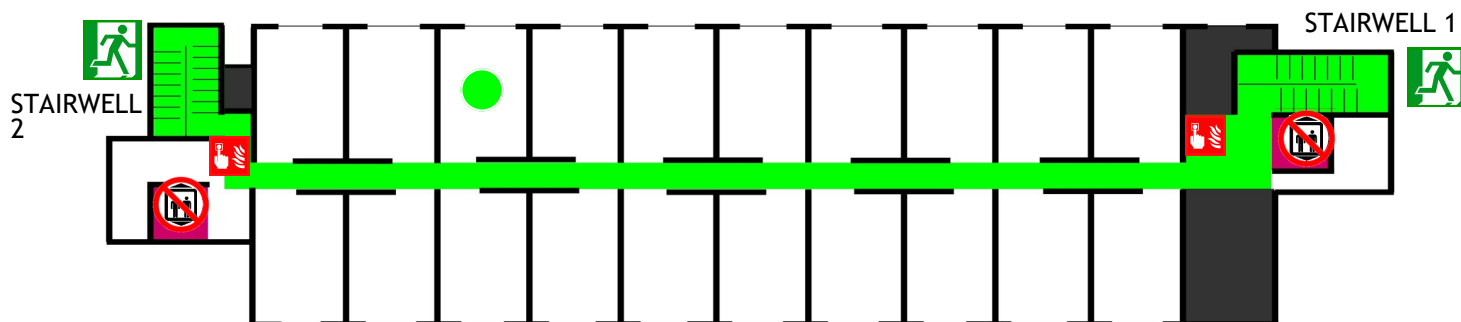


Conference Aston Hotel Building - You are here



7am - 11pm Day Assembly Point

5. Do not use the lifts
Do not stop to collect personal belongings
Do not re-enter the building until authorised to do so
Do not fight fire unless trained to do so
It is the responsibility of the guest, upon hearing the fire alarm, to evacuate the building.



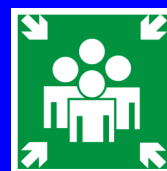
● YOUR CURRENT LOCATION
 SAFE ROUTE TO FIRE EXITS
 FIRE ALARM
 FIRE EXITS



Fire Action

If you discover a fire:

1. Immediately operate the nearest fire alarm call point. Dial 222 to alert Security, if safe to do so.
2. Evacuate the building via the nearest available exit and report to the assembly point.



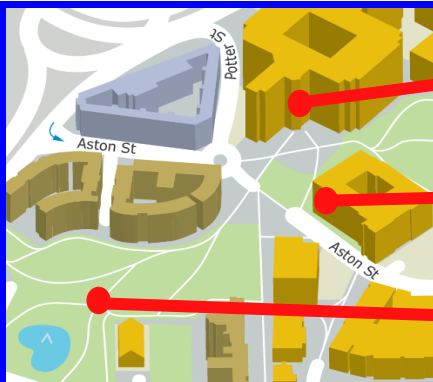
On hearing the fire alarm:

3. Evacuate the building via the nearest available exit.
4. Report to the assembly point located at:



Evacuation 7am-11pm: Lakeside amphitheatre area

Evacuation 11pm-7am: Inside the main reception of the Main Building



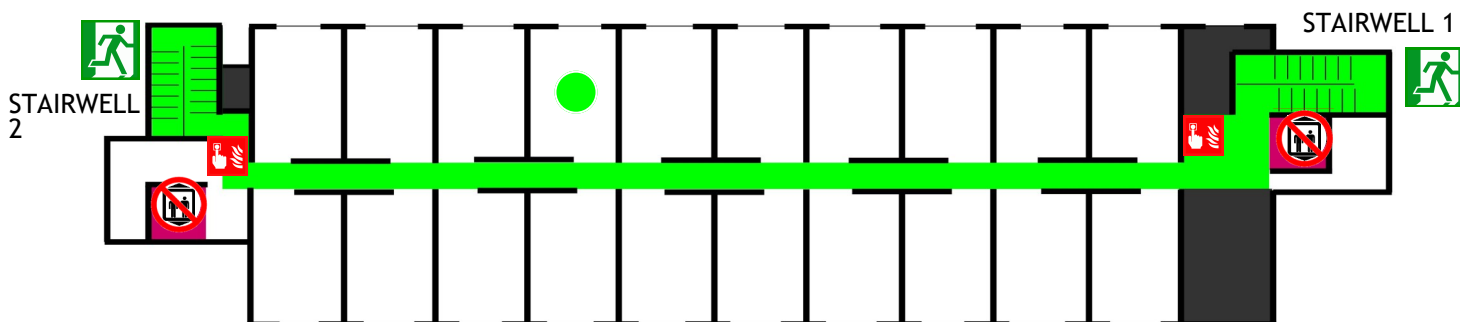
11pm - 7am Night Assembly Point

Conference Aston Hotel Building - You are here



7am - 11pm Day Assembly Point

5. Do not use the lifts
Do not stop to collect personal belongings
Do not re-enter the building until authorised to do so
Do not fight fire unless trained to do so
It is the responsibility of the guest, upon hearing the fire alarm, to evacuate the building.



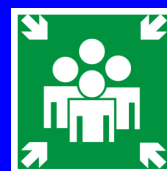
● YOUR CURRENT LOCATION ■ SAFE ROUTE TO FIRE EXITS 🔔 FIRE ALARM 🚪 FIRE EXITS



Fire Action

If you discover a fire:

1. Immediately operate the nearest fire alarm call point. Dial 222 to alert Security, if safe to do so.
2. Evacuate the building via the nearest available exit and report to the assembly point.



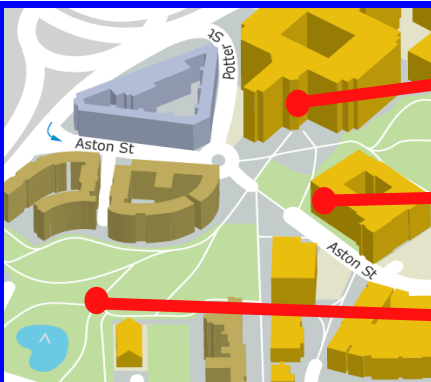
On hearing the fire alarm:

3. Evacuate the building via the nearest available exit.
4. Report to the assembly point located at:



Evacuation 7am-11pm: Lakeside amphitheatre area

Evacuation 11pm-7am: Inside the main reception of the Main Building



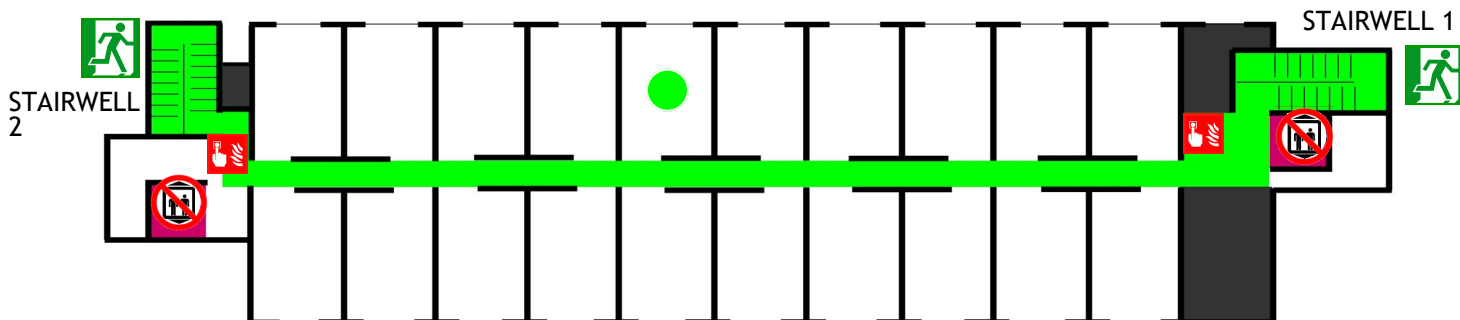
11pm - 7am Night Assembly Point

Conference Aston Hotel Building - You are here



7am - 11pm Day Assembly Point

5. Do not use the lifts
Do not stop to collect personal belongings
Do not re-enter the building until authorised to do so
Do not fight fire unless trained to do so
It is the responsibility of the guest, upon hearing the fire alarm, to evacuate the building.



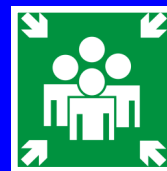
● YOUR CURRENT LOCATION
 SAFE ROUTE TO FIRE EXITS
 FIRE ALARM
 FIRE EXITS



Fire Action

If you discover a fire:

1. Immediately operate the nearest fire alarm call point. Dial 222 to alert Security, if safe to do so.
2. Evacuate the building via the nearest available exit and report to the assembly point.



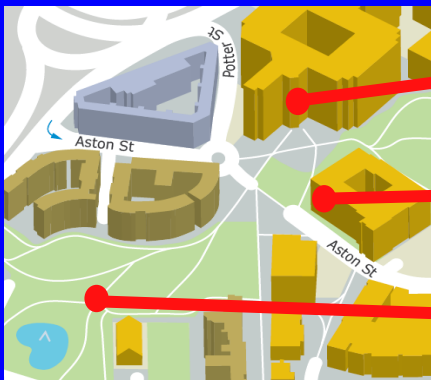
On hearing the fire alarm:

3. Evacuate the building via the nearest available exit.
4. Report to the assembly point located at:



Evacuation 7am-11pm: Lakeside amphitheatre area

Evacuation 11pm-7am: Inside the main reception of the Main Building



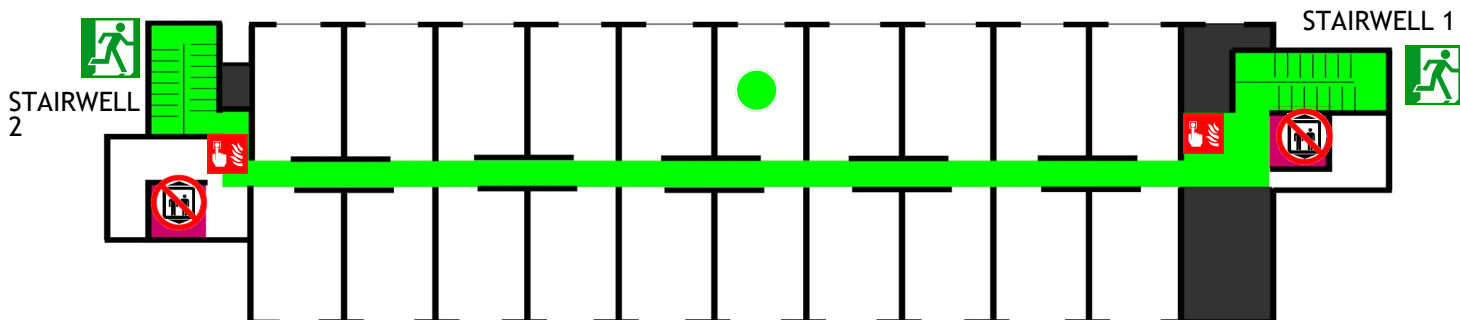
11pm - 7am Night Assembly Point

Conference Aston Hotel Building - You are here



7am - 11pm Day Assembly Point

5. Do not use the lifts
Do not stop to collect personal belongings
Do not re-enter the building until authorised to do so
Do not fight fire unless trained to do so
It is the responsibility of the guest, upon hearing the fire alarm, to evacuate the building.



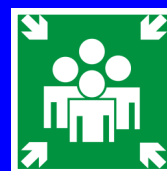
● YOUR CURRENT LOCATION
 SAFE ROUTE TO FIRE EXITS
 FIRE ALARM
 FIRE EXITS



Fire Action

If you discover a fire:

1. Immediately operate the nearest fire alarm call point. Dial 222 to alert Security, if safe to do so.
2. Evacuate the building via the nearest available exit and report to the assembly point.



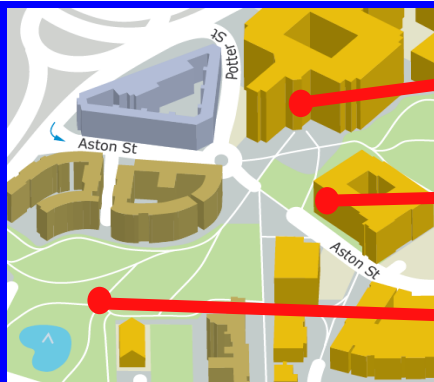
On hearing the fire alarm:

3. Evacuate the building via the nearest available exit.
4. Report to the assembly point located at:



Evacuation 7am-11pm: Lakeside amphitheatre area

Evacuation 11pm-7am: Inside the main reception of the Main Building



11pm - 7am Night Assembly Point

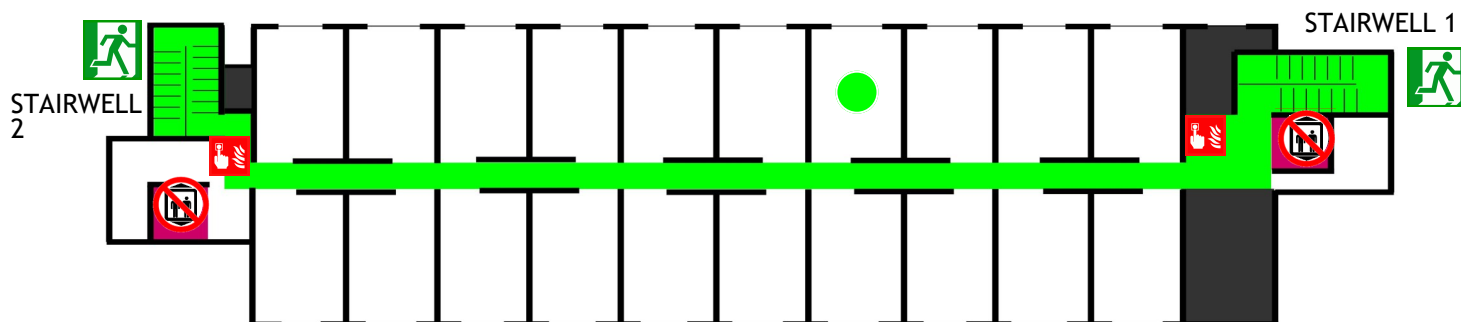


Conference Aston Hotel Building - You are here



7am - 11pm Day Assembly Point

5. Do not use the lifts
Do not stop to collect personal belongings
Do not re-enter the building until authorised to do so
Do not fight fire unless trained to do so
It is the responsibility of the guest, upon hearing the fire alarm, to evacuate the building.



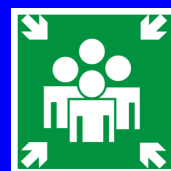
● YOUR CURRENT LOCATION ■ SAFE ROUTE TO FIRE EXITS 📞 FIRE ALARM 🚪 FIRE EXITS



Fire Action

If you discover a fire:

1. Immediately operate the nearest fire alarm call point. Dial 222 to alert Security, if safe to do so.
2. Evacuate the building via the nearest available exit and report to the assembly point.



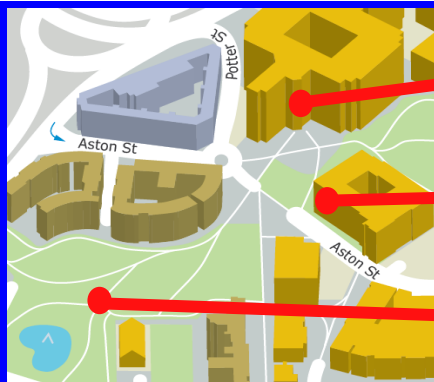
On hearing the fire alarm:

3. Evacuate the building via the nearest available exit.
4. Report to the assembly point located at:



Evacuation 7am-11pm: Lakeside amphitheatre area

Evacuation 11pm-7am: Inside the main reception of the Main Building



11pm - 7am Night Assembly Point

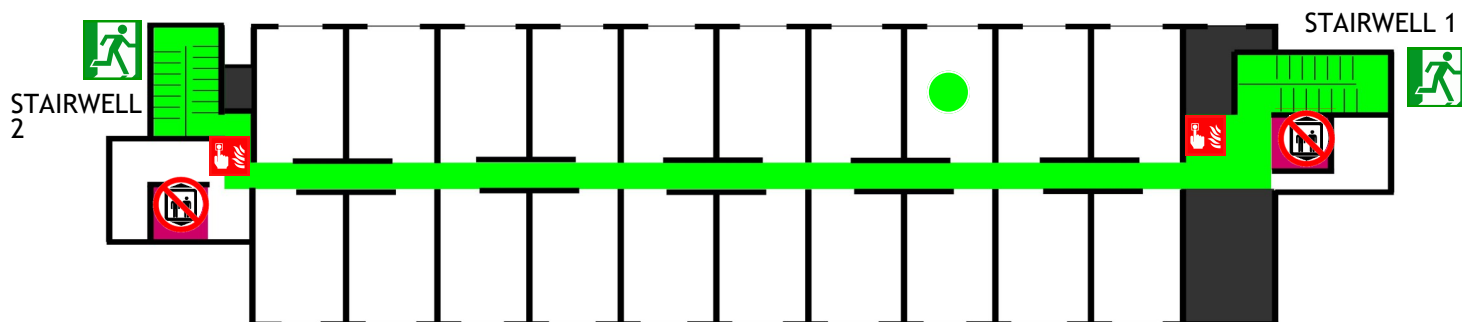


Conference Aston Hotel Building - You are here



7am - 11pm Day Assembly Point

5. Do not use the lifts
Do not stop to collect personal belongings
Do not re-enter the building until authorised to do so
Do not fight fire unless trained to do so
It is the responsibility of the guest, upon hearing the fire alarm, to evacuate the building.



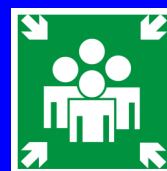
YOUR CURRENT LOCATION
 SAFE ROUTE TO FIRE EXITS
 FIRE ALARM
 FIRE EXITS



Fire Action

If you discover a fire:

1. Immediately operate the nearest fire alarm call point. Dial 222 to alert Security, if safe to do so.
2. Evacuate the building via the nearest available exit and report to the assembly point.



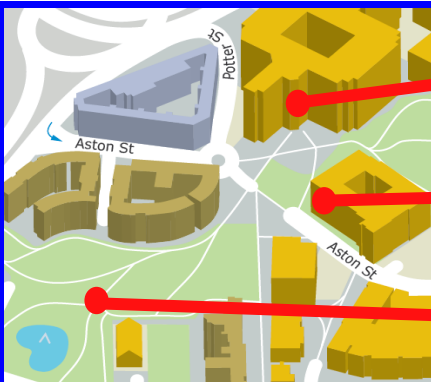
On hearing the fire alarm:

3. Evacuate the building via the nearest available exit.
4. Report to the assembly point located at:



Evacuation 7am-11pm: Lakeside amphitheatre area

Evacuation 11pm-7am: Inside the main reception of the Main Building



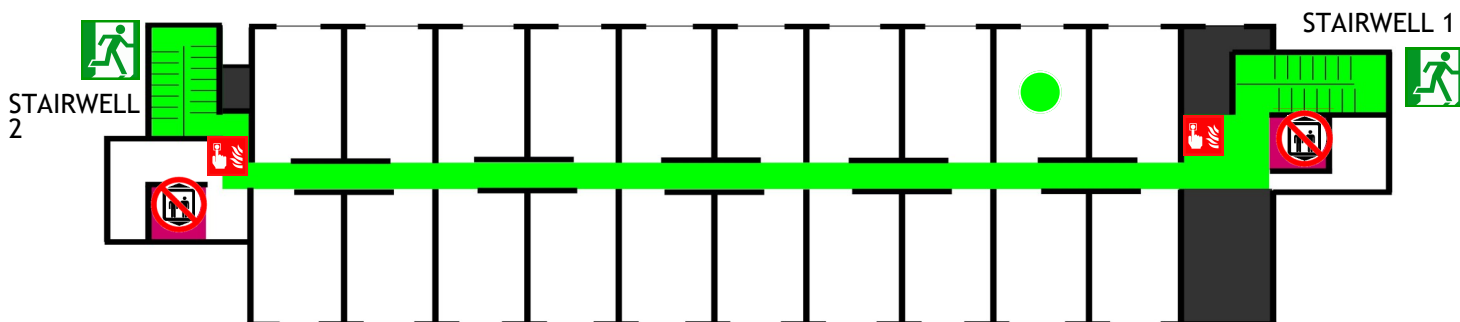
11pm - 7am Night Assembly Point

Conference Aston Hotel Building - You are here



7am - 11pm Day Assembly Point

5. Do not use the lifts
Do not stop to collect personal belongings
Do not re-enter the building until authorised to do so
Do not fight fire unless trained to do so
It is the responsibility of the guest, upon hearing the fire alarm, to evacuate the building.



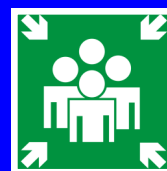
● YOUR CURRENT LOCATION
 SAFE ROUTE TO FIRE EXITS
 FIRE ALARM
 FIRE EXITS



Fire Action

If you discover a fire:

1. Immediately operate the nearest fire alarm call point. Dial 222 to alert Security, if safe to do so.
2. Evacuate the building via the nearest available exit and report to the assembly point.



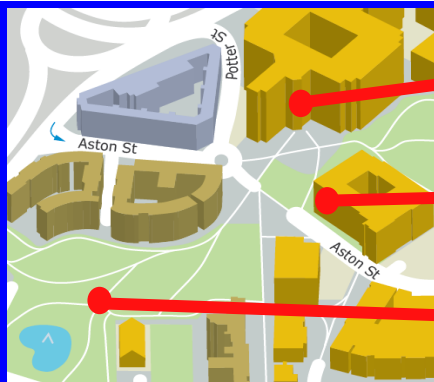
On hearing the fire alarm:

3. Evacuate the building via the nearest available exit.
4. Report to the assembly point located at:



Evacuation 7am-11pm: Lakeside amphitheatre area

Evacuation 11pm-7am: Inside the main reception of the Main Building



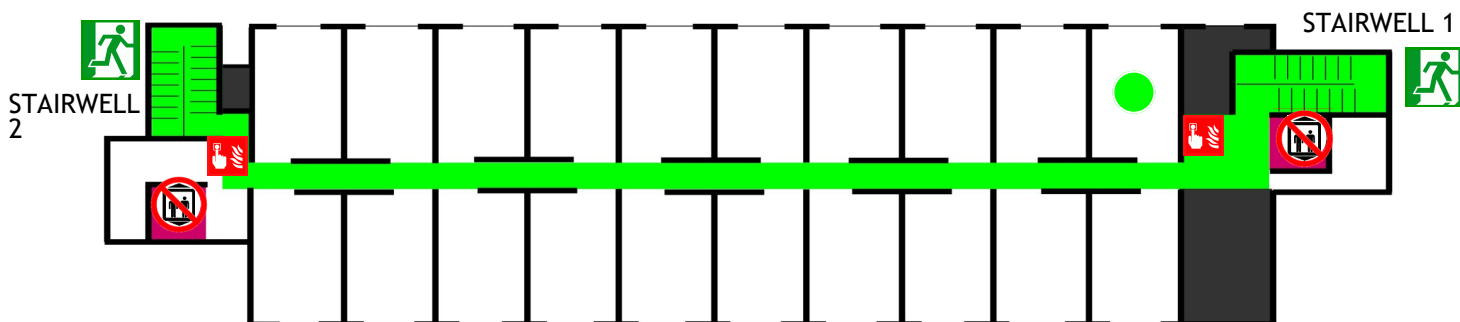
11pm - 7am Night Assembly Point

Conference Aston Hotel Building - You are here



7am - 11pm Day Assembly Point

5. Do not use the lifts
Do not stop to collect personal belongings
Do not re-enter the building until authorised to do so
Do not fight fire unless trained to do so
It is the responsibility of the guest, upon hearing the fire alarm, to evacuate the building.



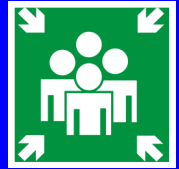
● YOUR CURRENT LOCATION
 SAFE ROUTE TO FIRE EXITS
 FIRE ALARM
 FIRE EXITS



Fire Action

If you discover a fire:

1. Immediately operate the nearest fire alarm call point. Dial 222 to alert Security, if safe to do so.
2. Evacuate the building via the nearest available exit and report to the assembly point.



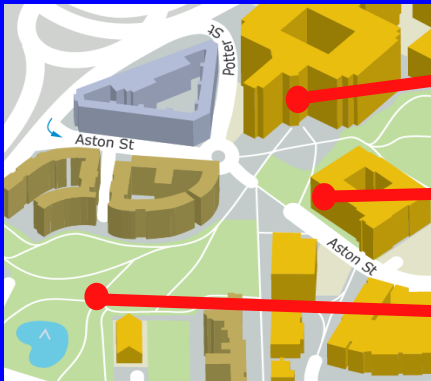
On hearing the fire alarm:

3. Evacuate the building via the nearest available exit.
4. Report to the assembly point located at:



Evacuation 7am-11pm: Lakeside amphitheatre area

Evacuation 11pm-7am: Inside the main reception of the Main Building



11pm - 7am Night Assembly Point

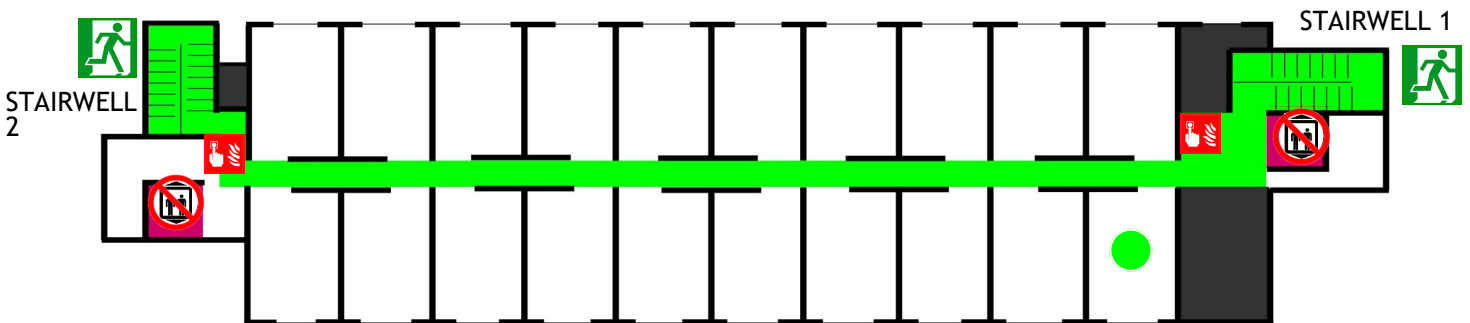


Conference Aston Hotel Building - You are here



7am - 11pm Day Assembly Point

5. Do not use the lifts
Do not stop to collect personal belongings
Do not re-enter the building until authorised to do so
Do not fight fire unless trained to do so
It is the responsibility of the guest, upon hearing the fire alarm, to evacuate the building.



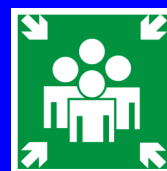
● YOUR CURRENT LOCATION ■ SAFE ROUTE TO FIRE EXITS ■ FIRE ALARM ■ FIRE EXITS



Fire Action

If you discover a fire:

1. Immediately operate the nearest fire alarm call point. Dial 222 to alert Security, if safe to do so.
2. Evacuate the building via the nearest available exit and report to the assembly point.



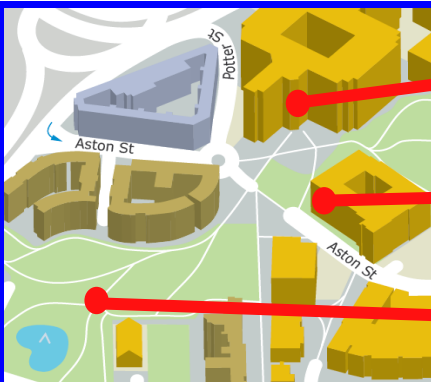
On hearing the fire alarm:

3. Evacuate the building via the nearest available exit.
4. Report to the assembly point located at:



Evacuation 7am-11pm: Lakeside amphitheatre area

Evacuation 11pm-7am: Inside the main reception of the Main Building



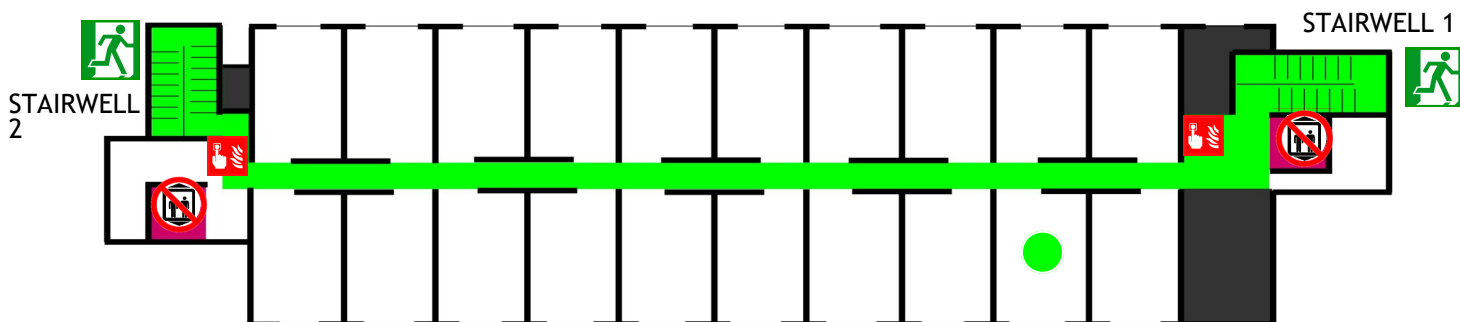
11pm - 7am Night Assembly Point

Conference Aston Hotel Building - You are here



7am - 11pm Day Assembly Point

5. Do not use the lifts
Do not stop to collect personal belongings
Do not re-enter the building until authorised to do so
Do not fight fire unless trained to do so
It is the responsibility of the guest, upon hearing the fire alarm, to evacuate the building.



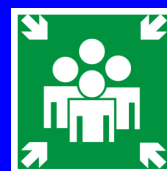
YOUR CURRENT LOCATION
 SAFE ROUTE TO FIRE EXITS
 FIRE ALARM
 FIRE EXITS



Fire Action

If you discover a fire:

1. Immediately operate the nearest fire alarm call point. Dial 222 to alert Security, if safe to do so.
2. Evacuate the building via the nearest available exit and report to the assembly point.



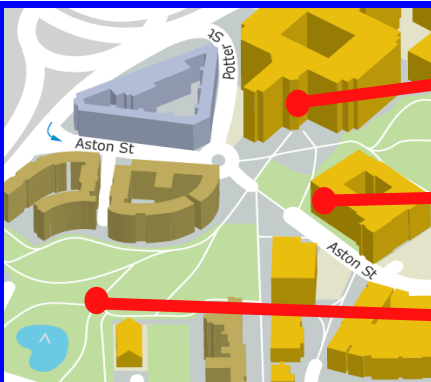
On hearing the fire alarm:

3. Evacuate the building via the nearest available exit.
4. Report to the assembly point located at:



Evacuation 7am-11pm: Lakeside amphitheatre area

Evacuation 11pm-7am: Inside the main reception of the Main Building



11pm - 7am Night Assembly Point

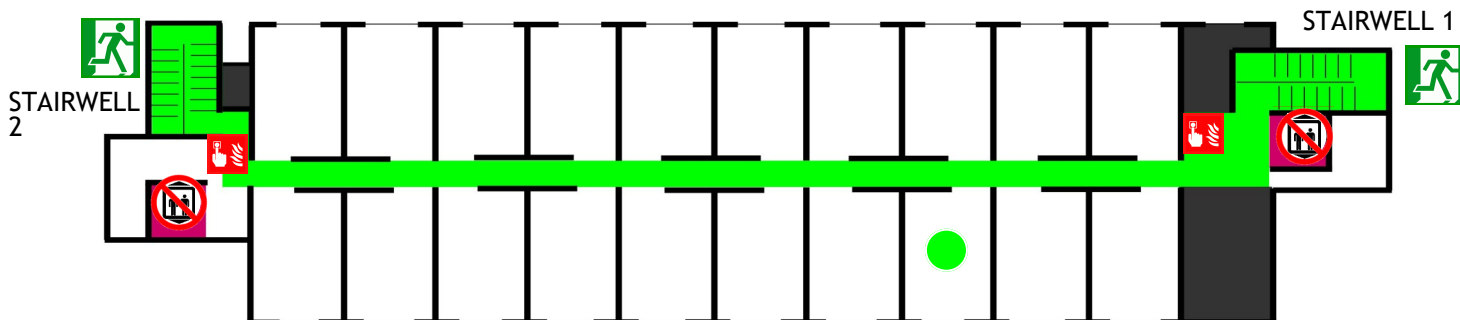


Conference Aston Hotel Building - You are here



7am - 11pm Day Assembly Point

5. Do not use the lifts
Do not stop to collect personal belongings
Do not re-enter the building until authorised to do so
Do not fight fire unless trained to do so
It is the responsibility of the guest, upon hearing the fire alarm, to evacuate the building.



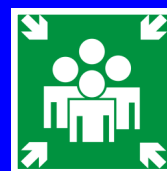
● YOUR CURRENT LOCATION ■ SAFE ROUTE TO FIRE EXITS 📞 FIRE ALARM 🚪 FIRE EXITS



Fire Action

If you discover a fire:

1. Immediately operate the nearest fire alarm call point. Dial 222 to alert Security, if safe to do so.
2. Evacuate the building via the nearest available exit and report to the assembly point.



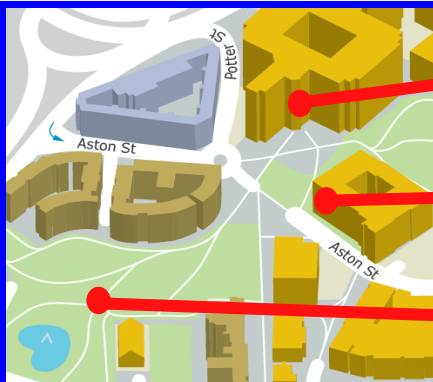
On hearing the fire alarm:

3. Evacuate the building via the nearest available exit.
4. Report to the assembly point located at:



Evacuation 7am-11pm: Lakeside amphitheatre area

Evacuation 11pm-7am: Inside the main reception of the Main Building



11pm - 7am Night Assembly Point

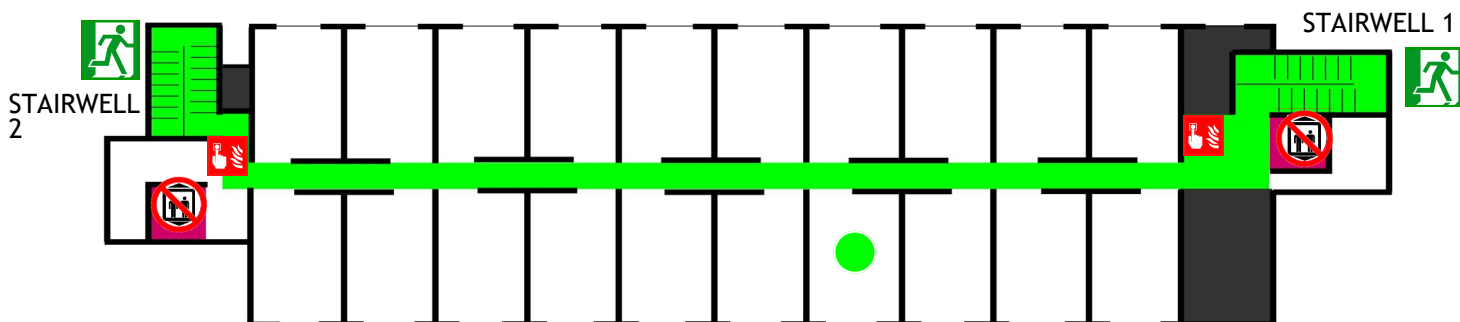


Conference Aston Hotel Building - You are here



7am - 11pm Day Assembly Point

5. Do not use the lifts
Do not stop to collect personal belongings
Do not re-enter the building until authorised to do so
Do not fight fire unless trained to do so
It is the responsibility of the guest, upon hearing the fire alarm, to evacuate the building.



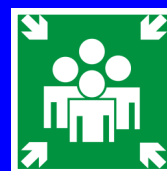
● YOUR CURRENT LOCATION
 SAFE ROUTE TO FIRE EXITS
 FIRE ALARM
 FIRE EXITS



Fire Action

If you discover a fire:

1. Immediately operate the nearest fire alarm call point. Dial 222 to alert Security, if safe to do so.
2. Evacuate the building via the nearest available exit and report to the assembly point.



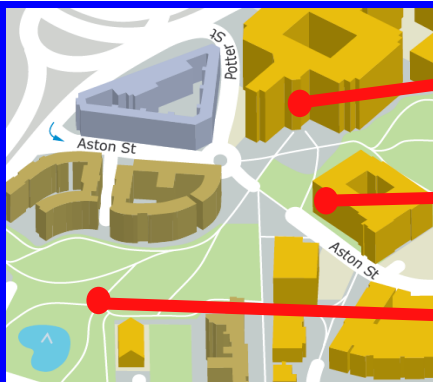
On hearing the fire alarm:

3. Evacuate the building via the nearest available exit.
4. Report to the assembly point located at:



Evacuation 7am-11pm: Lakeside amphitheatre area

Evacuation 11pm-7am: Inside the main reception of the Main Building



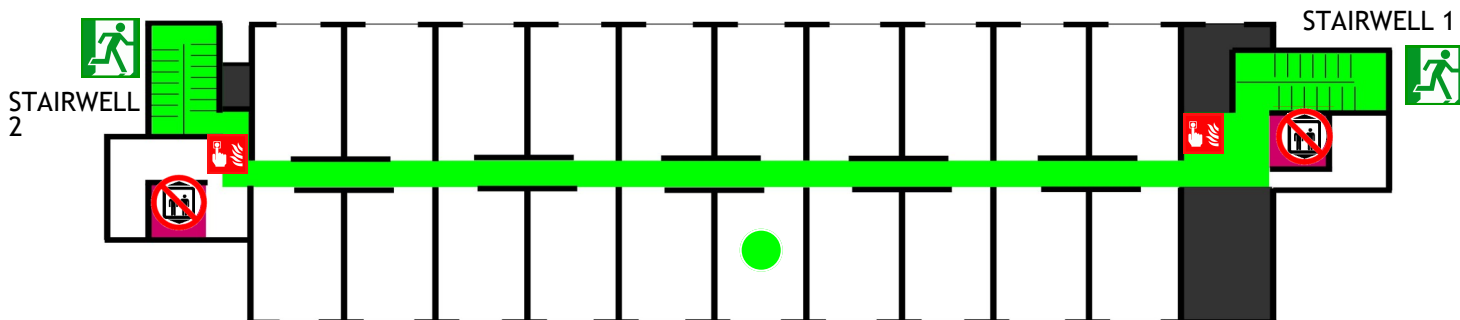
11pm - 7am Night Assembly Point

Conference Aston Hotel Building - You are here



7am - 11pm Day Assembly Point

5. Do not use the lifts
Do not stop to collect personal belongings
Do not re-enter the building until authorised to do so
Do not fight fire unless trained to do so
It is the responsibility of the guest, upon hearing the fire alarm, to evacuate the building.



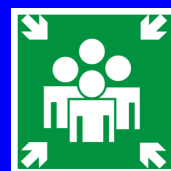
● YOUR CURRENT LOCATION
 SAFE ROUTE TO FIRE EXITS
 FIRE ALARM
 FIRE EXITS



Fire Action

If you discover a fire:

1. Immediately operate the nearest fire alarm call point. Dial 222 to alert Security, if safe to do so.
2. Evacuate the building via the nearest available exit and report to the assembly point.



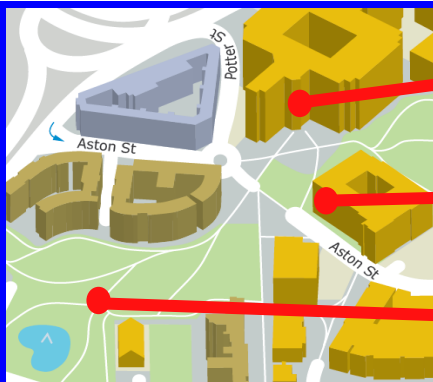
On hearing the fire alarm:

3. Evacuate the building via the nearest available exit.
4. Report to the assembly point located at:



Evacuation 7am-11pm: Lakeside amphitheatre area

Evacuation 11pm-7am: Inside the main reception of the Main Building



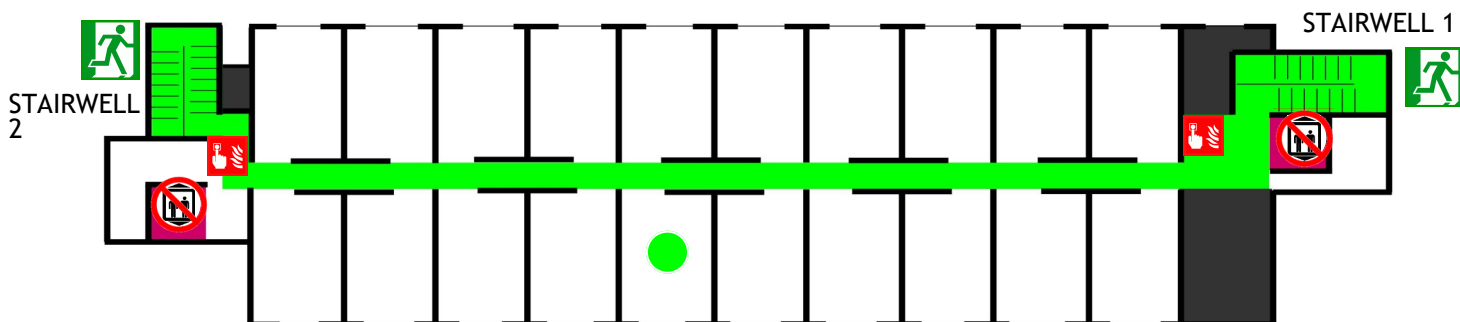
11pm - 7am Night Assembly Point

Conference Aston Hotel Building - You are here



7am - 11pm Day Assembly Point

5. Do not use the lifts
Do not stop to collect personal belongings
Do not re-enter the building until authorised to do so
Do not fight fire unless trained to do so
It is the responsibility of the guest, upon hearing the fire alarm, to evacuate the building.



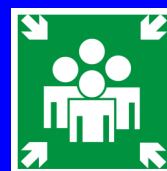
● YOUR CURRENT LOCATION ■ SAFE ROUTE TO FIRE EXITS 📞 FIRE ALARM 🚪 FIRE EXITS



Fire Action

If you discover a fire:

1. Immediately operate the nearest fire alarm call point. Dial 222 to alert Security, if safe to do so.
2. Evacuate the building via the nearest available exit and report to the assembly point.



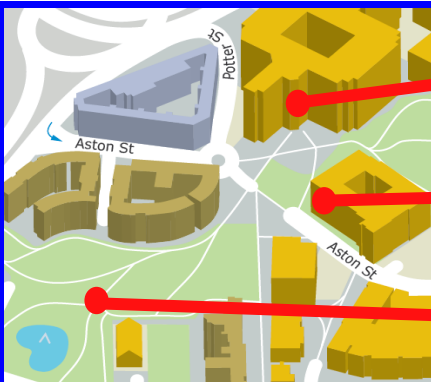
On hearing the fire alarm:

3. Evacuate the building via the nearest available exit.
4. Report to the assembly point located at:



Evacuation 7am-11pm: Lakeside amphitheatre area

Evacuation 11pm-7am: Inside the main reception of the Main Building



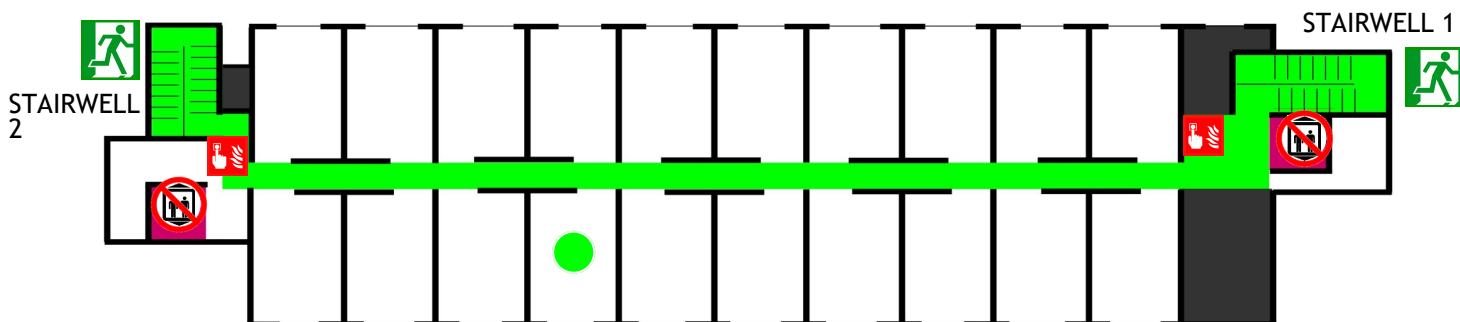
11pm - 7am Night Assembly Point

Conference Aston Hotel Building - You are here



7am - 11pm Day Assembly Point

5. Do not use the lifts
Do not stop to collect personal belongings
Do not re-enter the building until authorised to do so
Do not fight fire unless trained to do so
It is the responsibility of the guest, upon hearing the fire alarm, to evacuate the building.



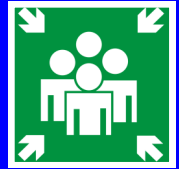
● YOUR CURRENT LOCATION ■ SAFE ROUTE TO FIRE EXITS 🔔 FIRE ALARM 🚪 FIRE EXITS



Fire Action

If you discover a fire:

1. Immediately operate the nearest fire alarm call point. Dial 222 to alert Security, if safe to do so.
2. Evacuate the building via the nearest available exit and report to the assembly point.



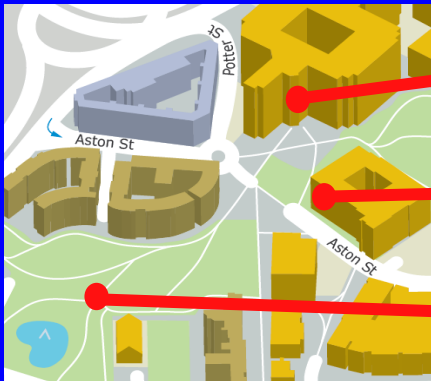
On hearing the fire alarm:

3. Evacuate the building via the nearest available exit.
4. Report to the assembly point located at:



Evacuation 7am-11pm: Lakeside amphitheatre area

Evacuation 11pm-7am: Inside the main reception of the Main Building



11pm - 7am Night Assembly Point

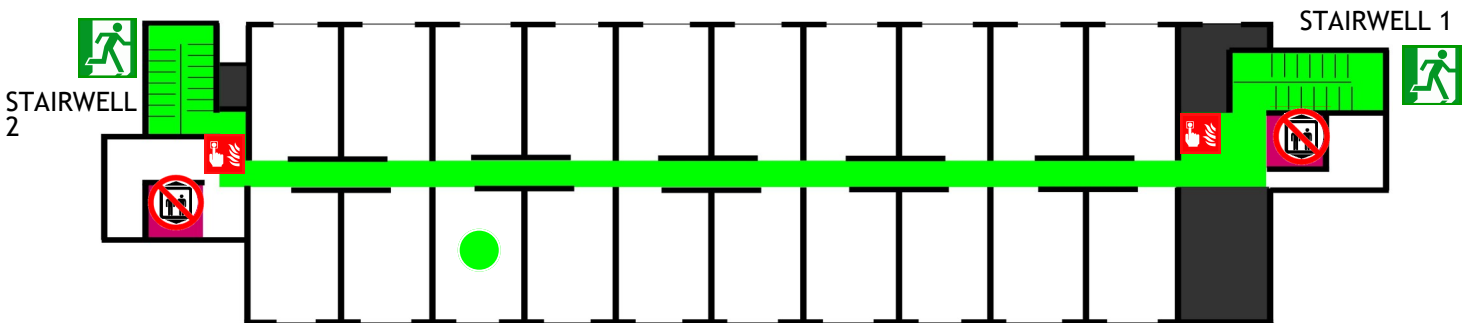


Conference Aston Hotel Building - You are here



7am - 11pm Day Assembly Point

5. Do not use the lifts
Do not stop to collect personal belongings
Do not re-enter the building until authorised to do so
Do not fight fire unless trained to do so
It is the responsibility of the guest, upon hearing the fire alarm, to evacuate the building.



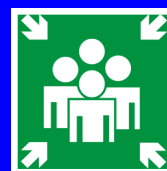
● YOUR CURRENT LOCATION ■ SAFE ROUTE TO FIRE EXITS 🔔 FIRE ALARM 🚪 FIRE EXITS



Fire Action

If you discover a fire:

1. Immediately operate the nearest fire alarm call point. Dial 222 to alert Security, if safe to do so.
2. Evacuate the building via the nearest available exit and report to the assembly point.



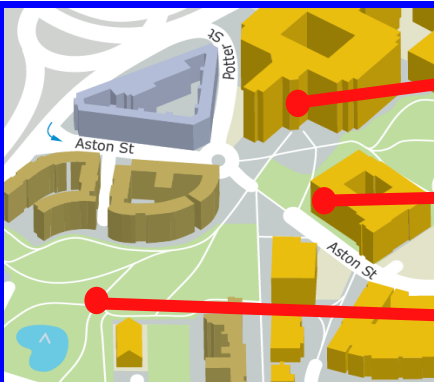
On hearing the fire alarm:

3. Evacuate the building via the nearest available exit.
4. Report to the assembly point located at:



Evacuation 7am-11pm: Lakeside amphitheatre area

Evacuation 11pm-7am: Inside the main reception of the Main Building



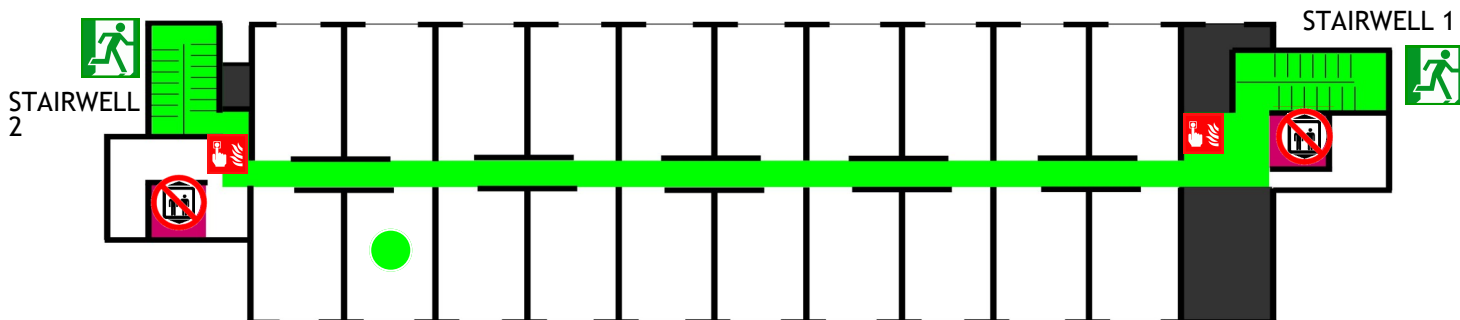
11pm - 7am Night Assembly Point

Conference Aston Hotel Building - You are here



7am - 11pm Day Assembly Point

5. Do not use the lifts
Do not stop to collect personal belongings
Do not re-enter the building until authorised to do so
Do not fight fire unless trained to do so
It is the responsibility of the guest, upon hearing the fire alarm, to evacuate the building.



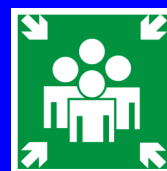
● YOUR CURRENT LOCATION
 SAFE ROUTE TO FIRE EXITS
 FIRE ALARM
 FIRE EXITS



Fire Action

If you discover a fire:

1. Immediately operate the nearest fire alarm call point. Dial 222 to alert Security, if safe to do so.
2. Evacuate the building via the nearest available exit and report to the assembly point.



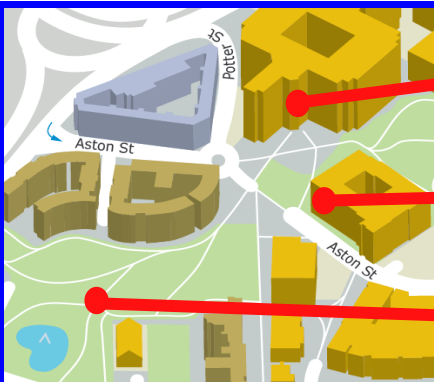
On hearing the fire alarm:

3. Evacuate the building via the nearest available exit.
4. Report to the assembly point located at:



Evacuation 7am-11pm: Lakeside amphitheatre area

Evacuation 11pm-7am: Inside the main reception of the Main Building



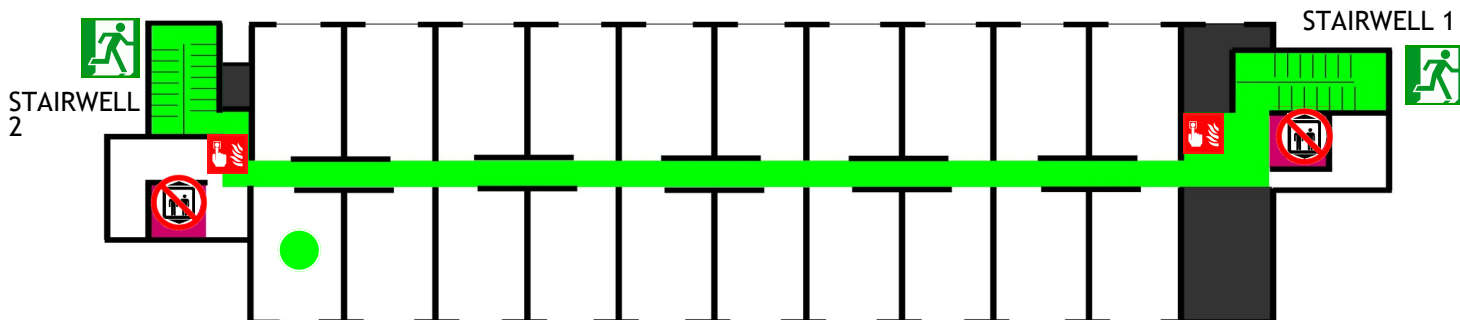
11pm - 7am Night Assembly Point

Conference Aston Hotel Building - You are here



7am - 11pm Day Assembly Point

5. Do not use the lifts
Do not stop to collect personal belongings
Do not re-enter the building until authorised to do so
Do not fight fire unless trained to do so
It is the responsibility of the guest, upon hearing the fire alarm, to evacuate the building.



● YOUR CURRENT LOCATION
 SAFE ROUTE TO FIRE EXITS
 FIRE ALARM
 FIRE EXITS